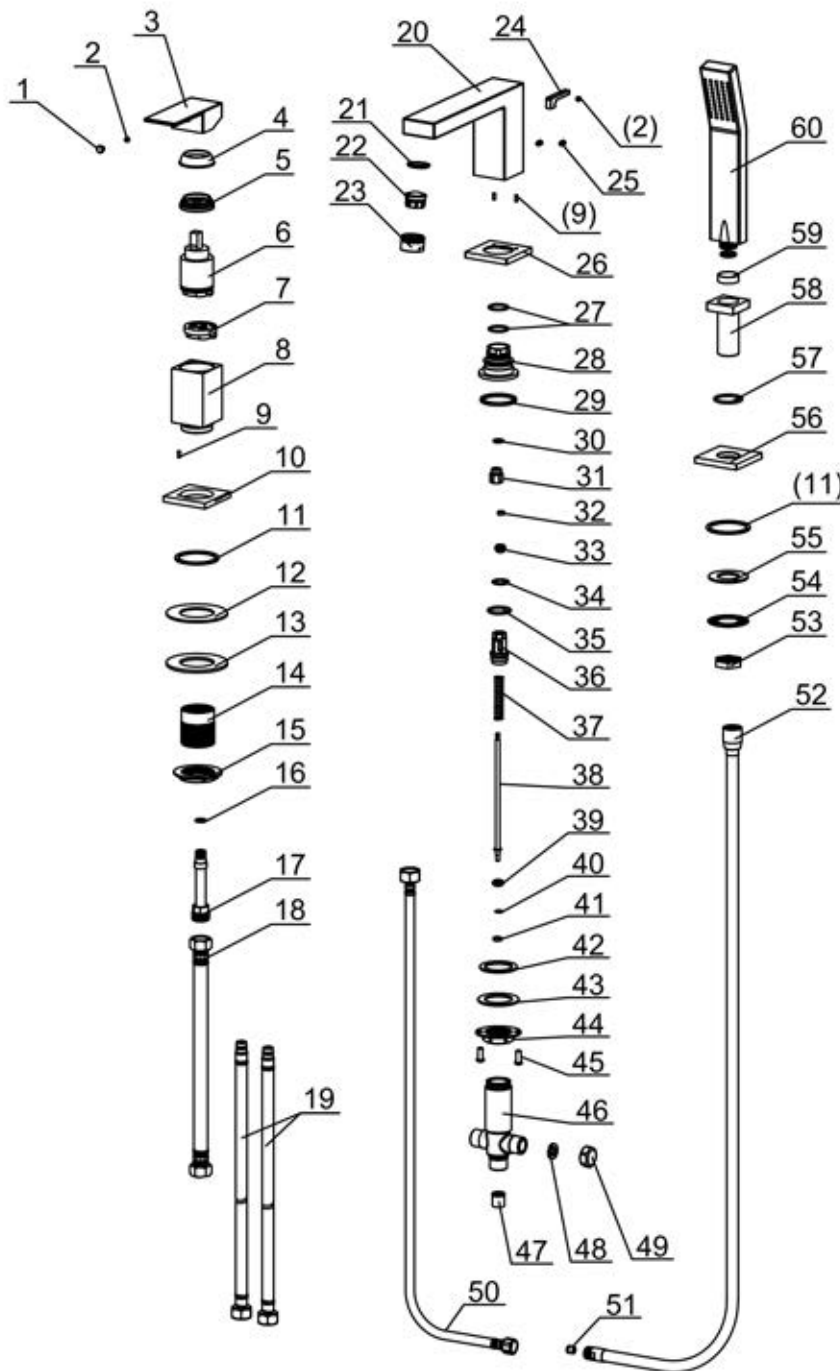


AB2322



No.	Description	Material	Qty	Code
60	Hand shower	Subassembly	1	50030053401
59	235R washer	ABS	1	70020038830
58	235R shower holder	Subassembly	1	50030143401
57	30*2.65 "O" ring	NBR	1	70010003130
56	2262 plate	H59	1	50010055480
55	washer	NBR	1	70020006920
54	2025 gasket	Stainless steel	1	70030007700
53	Nut (26*19)	H59	1	40060031952
52	Flexible shower hose G1/2xM15x1 (NSF)	Subassembly	1	50040143601
51	Check valve (10)	Subassembly	1	20070016100
50	G _{1/2} to M15*1 steel wire pipe (800)	Subassembly	1	50040017601
49	2186 G _{1/2} Stopper	H60	1	40060052201
48	Hose washer	NBR	1	70020007830
47	DW15 check valve	Subassembly	1	20070010700
46	2588 Mainbody	ZCuZn40Pb2	1	10020071052
45	M6*20 cross bolt	Stainless steel	2	50060023300
44	M32*1.5 nut	H59	1	50060024800
43	3326 gasket	Q235A	1	70020037301
42	3098 washer (45.5*34*2)	NBR	1	70020002130
41	M4 nut	H59	1	50060024200
40	2647 washer	H65	1	70020028252
39	2651 rubber plug	NBR	1	70030045330
38	400500396-2588 draw bar	Stainless steel	1	40050039637
37	Spring	1Cr18Ni9Ti	1	50060027900
36	2588 diverter limit cover	H59	1	40050033852
35	23.6*2.65 "O" ring	NBR	1	70010002430
34	17*1.8 "O" ring	NBR	1	70010001630
33	2651 plastic limit cover	POM	1	40050040820
32	2651 taper ring	NBR	1	70030046330
31	2651 fixing screw	H59	1	40060138252
30	13*1.9 "O" ring	NBR	1	70010000930
29	1141 washer	NBR	1	70020021530
28	2588 connector	H59	1	40060104952
27	25*2 "O" ring	NBR	2	70010002730
26	2329 plate	H59	1	50010096401
25	M5*8 fixing screw	Stainless steel	2	50060011600
24	2583 knob	H59	1	40050023801
23	M28*1 housing	H59	1	50050001901
22	M28*1 insert (TD)	Subassembly	1	50050025731
21	M28*1 washer	Rubber	1	70020001430
20	2329 spout	ZCuZn40Pb2	1	30020022501
19	9/16*M12*1 steel wire pipe (450)	Subassembly	2	50040062200
18	G _{1/2} steel wire pipe (450)	Subassembly	1	50040015600
17	2589 Connection pipe	Subassembly	1	50040074501
16	10*1.8 "O" ring	NBR	1	70010008430
15	2725 nut	H59	1	40060086732
14	2589 thread pipe	H59	1	40060086801
13	1248 washer	Q235A	1	70020018201
12	1248 flat washer	NBR	1	70020018130
11	1225 flat washer	NBR	2	70020010030
10	2589 plate	H59	1	50010074901
9	Ø3*8 dowel	Stainless steel	3	40010060600
8	2554 mainbody	H59	1	10020078601
7	Cartridge seat	Subassembly	1	20060009100
6	40H cartridge	Subassembly	1	20060005900
5	2383 cartridge nut	H59	1	40060073552
4	2325 decorative cover	ABS	1	50010078101
3	2315 handle	Zinc alloy	1	20010010701
2	M5*4 fixing screw	Stainless steel	2	50060012000
1	Indicator (HC)	ABS	1	20010010801
No.	Description	Material	Qty	Code